



## Fire Rated Cladding Seals

### Trade Name: Astro Clad Ventilated Fire Barriers



**Improves cladding performance**

**Creates a fire barrier within the cladding**

**30-120 minutes rating**

**Horizontal and Vertical use**

**Suitable for ventilated cavities from 15mm**

**Tested to BS 476Part 20**

### Description

Many rainscreen and cladding systems are designed with an open cavity to provide back ventilation. The cavity acts like an open chimney to allow for moisture dissipation and to create a back pressure to repel rain ingress.

However in a fire situation this chimney effect creates an open path for the hidden spread of fire both vertically and horizontally behind the cladding system.

The Astroflame range of fire rated cladding seals will maintain the ventilated cavity in normal conditions, leaving a continuous free air space, but in the event of a fire, the intumescent ventilated fire barrier will quickly expand to seal off the cavity to prevent the spread of fire.

### Ventilated Fire Barriers for Cavities 15mm - 50mm



Many timber framed structures require a continuous ventilated to be maintained to dissipate moisture and prevent damp problems.

The Astroflame ventilated fire barriers have

been tested in combustible timber constructions and can maintain the minimum 30 minute rating whilst allowing continuous ventilation in normal conditions.

### Astro Clad – AFFRCLAD35

Astro Clad – AFFRCLAD35 was designed to meet the NHBC requirements to maintain a minimum 15mm ventilation gap in timber frame constructions.

The product has been successfully fire tested in maximum size cavities of 25mm fitted directly onto combustible breather membrane and fixed into the timber structure to provide at least 30 minutes fire rating.

It can additionally achieve greater fire ratings in non-combustible structures.

#### Size:

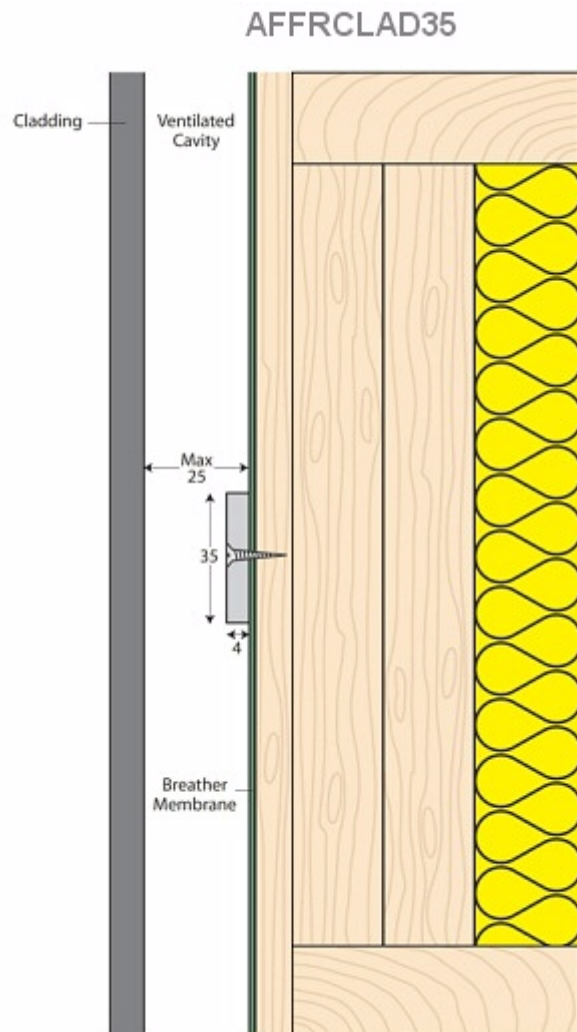
35mm x 4mm x 1000mm encased in foil  
Maximum cavity size; 25mm  
Maximum free area; 83%

#### Fire ratings:

Minimum 30 minutes in Timber Structures  
120 minutes in Non-Combustible Structures

#### To Order

Astro Clad Silver 35mm x 4mm x 1000mm  
AFFRCLAD35



### Astro Clad – AFFRCLAD75

Astro Clad- AFFRCLAD75 was developed following an increasing demand for a suitable product to close off larger cavities up to 50mm in timber frame constructions.

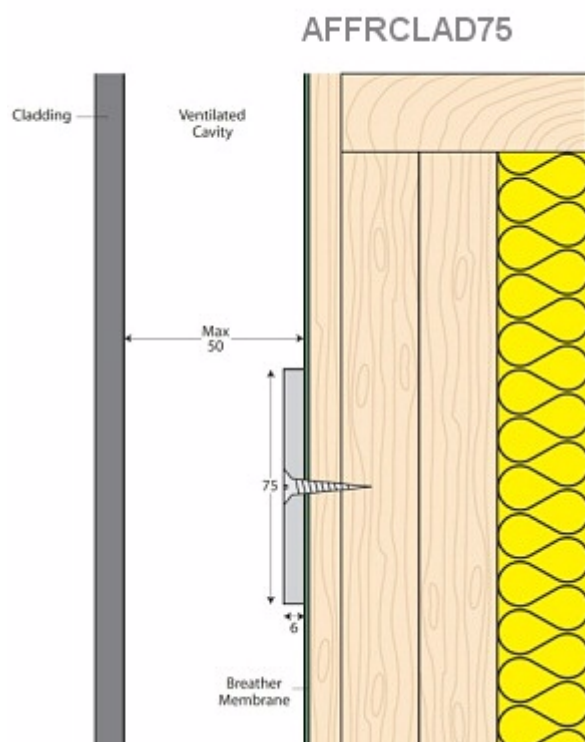
The product has been successfully fire tested in cavities up to a maximum of 50mm within both combustible timber structures and non-combustible structures to provide up to 120 minutes fire rating.

#### Size:

75mm x 6mm x 1000mm encased in foil  
Maximum cavity size; 50mm  
Maximum free area; 87%

#### Fire ratings:

Minimum 30 minutes in Timber Structures,  
90 minutes on mineral wool over cement board  
120 minutes in Non-Combustible Structures



To order:  
Astro Clad Silver 75mm x 6mm x 1000mm AFFRCLAD75

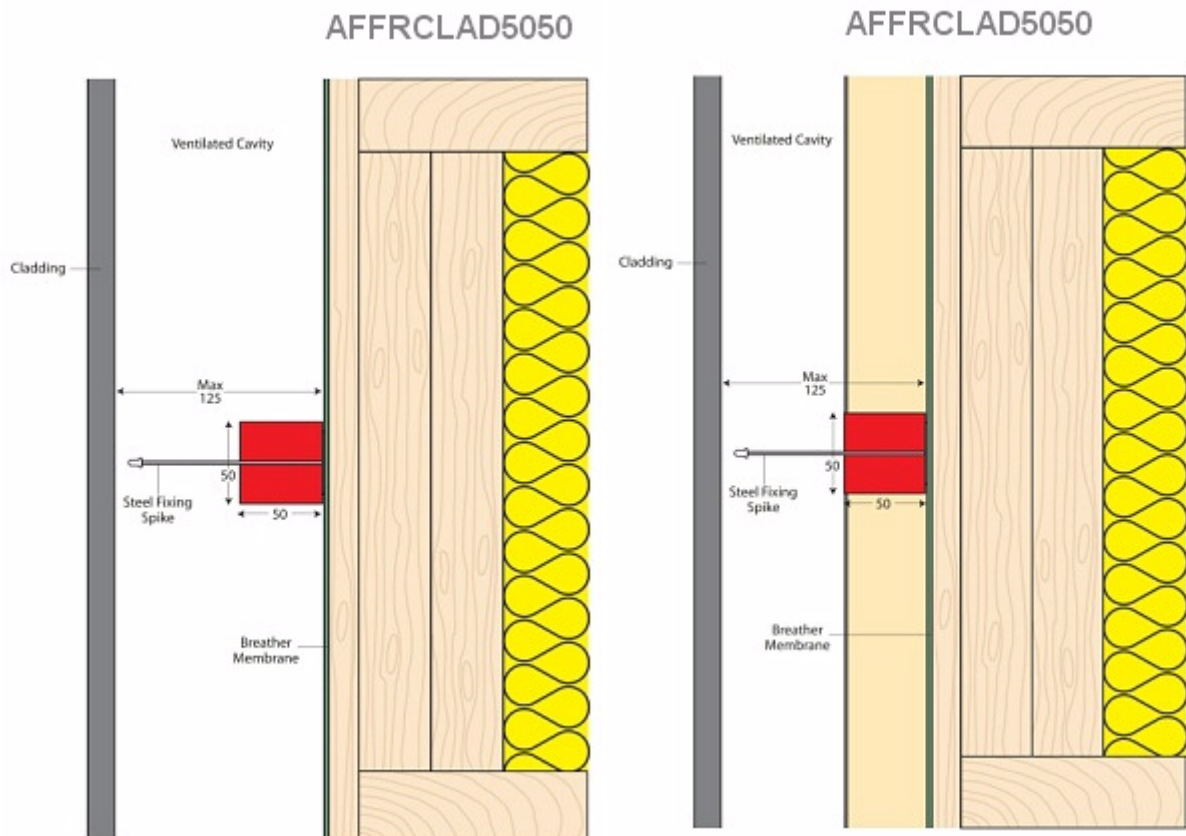
## Ventilated Fire Barriers for Cavities up to & over 125mm

### Astro Clad – AFFRCLAD5050

Astro Clad – AFFRCLAD5050 was designed to provide a large continuous open air space for cavities up to 125mm.



The product has been successfully fire tested to a maximum cavity size of 125mm fitted directly onto combustible breather membrane and fixed into the timber structure to provide at least 30 minutes fire rating.



In addition the ventilated fire barrier can be fitted in between phenolic insulation to provide an effective fire barrier.

**Size:**

50mm x 50m x 1000mm encapsulated in red polythene

**Maximum cavity size:**

125mm

**Maximum free area:**

60%

**Fire ratings:**

Minimum 30 minutes in Timber Structures

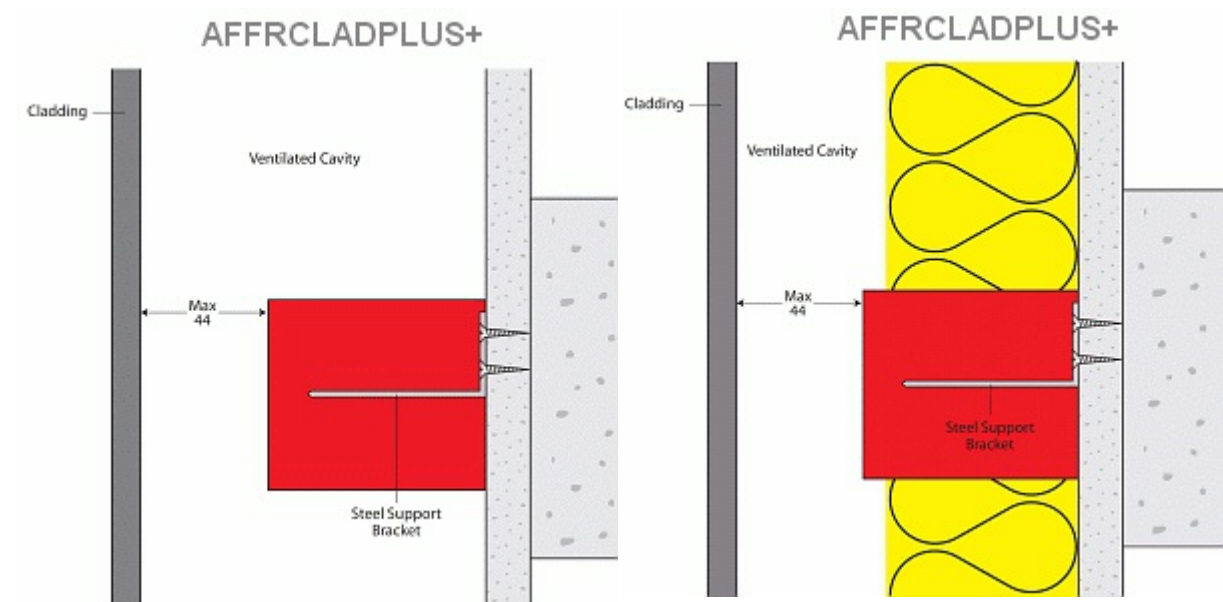
Minimum 30 minutes fitted between Phenolic Insulation

**To order:**

Astro Clad Red 50mm x 50mm x 1000mm AFFRCLAD5050

**Astro Clad – AFFRCLADPLUS+**

Astro Clad-AFFRCLADPLUS+ offers an effective fire barrier for cavities over 125mm. The product has been successfully fire tested for up to 90 minutes fitted directly onto cement board.



The product not only offers a superior fire rating but also allows a continuous ventilation space of up to 44mm. This provides excellent ventilation behind the cladding whilst leaving enough free space for the installer to easily install the cladding panels after the ventilated fire barrier seal.

**Size:**

75mm thick x 1000mm x Product Width encapsulated in red polythene

Product Width = Total Cavity Width minus 44mm

**Maximum Air Gap:**

44mm

**Fire ratings:**

90 minutes fixed to cement board

**To order:**

Astro Clad Red 75mm x Your Size x 1000mm AFFRCLADPLUS+

**To Order & Specify**

Quote: Quantity /Trade name/Product ref

Typical wording: 10/ASTRO CLAD / AFFRCLAD35

### **Health And Safety**

See COSHH Sheet.

### **Installation**

Please refer to our install sheet

As part of our policy of ongoing improvements, we reserve the right to modify, alter or change product specifications without giving notice. Product illustrations are representations only. All information contained in this document is provided for guidance only, and as ASTROFLAME FIRESEALS LTD has no control over the installation methods of the products, or of the prevailing site conditions, no warranties expressed or implied are intended to be given as to the actual performance of the products mentioned or referred to, and no liability whatsoever will be accepted for any loss, damage or injury arising from the use of the information given of products mentioned or referred to herein.

The above information to the best of our knowledge is true and accurate and based upon current test data and is supplied for your guidance only. Customers should satisfy themselves to the suitability of the product in its intended use and no guarantee is given or implied since the conditions of actual use are beyond our control. ASTROflame (Fireseals) Ltd, disclaim any liability for loss, damage or other expense arising from the use of information, data or products mentioned or referred to and reserve the right to change any details or specifications without notice.

Astroflame (Fire Seals) Ltd. Intumescent House  
Unit 8, The IO Centre, Stephenson Road, Segensworth  
FAREHAM, ENGLAND PO15 5RU

tel 0800 023 2482  
(01329 844500)

fax 0800 023 2483  
(01329 844600)

intl  
tel +44 1329 844500

fax +44 1329 844600

email

