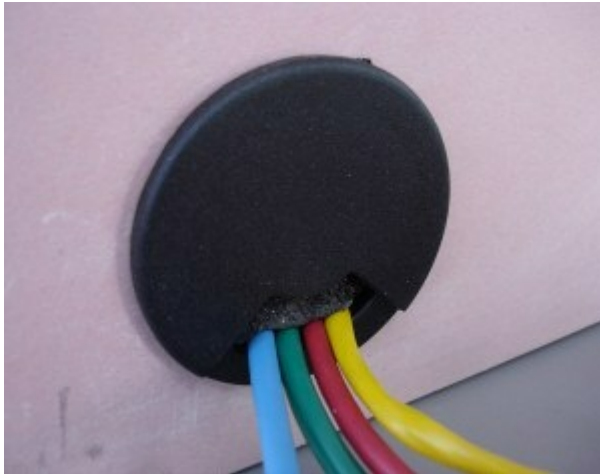


## Intumescent Fire & Acoustic Cable Port

### Trade Name: ASTRO FRA Cable Port



**Tested to BS 476 Part 20 for up to 120 minutes.**

**Provides an effective acoustic barrier to both impact and airborne sounds.**

**Easy to install**

**Maintains the fire protection performance of the wall - preventing or delaying the spread of fire for up to 120 minutes.**

**Prevents or delays fire from entering a wall cavity and attacking the building structure.**

**Allows new cables to be added at easily, and old cables to be removed.**

**With the end caps removed, the cable port will accept most sizes of cable end plugs.**

**Especially useful in situations which require equipment to be temporarily used in one room e.g. hospitals, schools.**



### **Description**

Wall penetrations are widely made in private, public and commercial buildings for the passage of cables. The walls are subject to fire regulations and most will have to be fire rated.

However, once a hole is made in a wall for the passage of cables, the integrity of the construction and its ability to perform in a fire can be reduced significantly, in addition the ability for a wall to provide an effective acoustic barrier is also impaired. To comply with Building Control Approved Document B, all wall penetrations must be reinstated to the same fire rating as the wall.

The prevention of fire from entering wall cavities and attacking the structure is critical to the overall integrity of the building. The use of cabling to hard wire IT, audio and communication equipment around the home and office is rising steeply and therefore the need for holes in fire rated walls is also rising.

To combat this Astroflame, as part of its continuing development of passive fire and acoustic protection solutions, has developed the ASTRO FRA Cable Port which allows the addition and removal of cables through walls whilst maintaining the fire and acoustic rating of the structure.

Typical cables include Audio, Broadband, Satellite TV, Telephone, LAN, USB and security.

Not only does the ASTRO FRA Cable Port allow cable penetrations to meet Building Regulations but they also create a very neat finish to an unsightly problem.

ASTRO FRA Cable ports have been tested to BS476 part 20 in an uninsulated plasterboard wall construction for 120 minutes without failure in either insulation or integrity and independently acoustically tested by Sound Research Laboratories to both BS EN150 140-3:1995 and BS 2750 part 3 1995.

The Cable ports have been developed to provide maximum protection for cable penetrations and ease of fitting. In a fire situation, the intumescent plugs within the cable port expand and fill all of the available space with a fire resistant highly insulating char. The fire is unable to penetrate the hole and the char is able to give the additional insulation protection to the wall void by reducing the chance of heat build up and the ignition of flammable structural members. The penetration in the wall also provides a path for air, thus creating heat loss and drafts, the fitting of a ASTRO FRA Cable port reduces this problem.

### **Availability**

The cable port is designed for single or multiple cables up to a maximum of 10 cables depending upon cable diameter.

Available in singles or boxes of 10

### **To Order & Specify**

Please quote : QTY / TRADE NAME / PRODUCT REF  
Typical wording 10 / ASTRO FRA CABLE PORT / AFFRACPORT

### **Fire Test And Assessment Reports**

ASTRO FRA Cable Ports have been tested to BS476 part 20 in an un-insulated plasterboard wall construction for 120 minutes without failure in either insulation or integrity.

Acoustically tested by Sound Research Laboratories to both BS EN150 140-3: 1995 & BS 2750 Part 3 1995.

### **Health And Safety**

See COSHH Sheet.

### **Installation**

Please refer to our install sheet

For additional testing, or technical information please contact ASTROFLAME FIRESEALS LTD.

Issue 06/07

As part of our policy of ongoing improvements, we reserve the right to modify, alter or change product specifications without giving notice. Product illustrations are representations only. All information contained in this document is provided for guidance only, and as ASTROFLAME FIRESEALS LTD has no control over the installation methods of the products, or of the prevailing site conditions, no warranties expressed or implied are intended to be given as to the actual performance of the products mentioned or referred to, and no liability whatsoever will be accepted for any loss, damage or injury arising from the use of the information given of products mentioned or referred to herein.

The above information to the best of our knowledge is true and accurate and based upon current test data and is supplied for your guidance only. Customers should satisfy themselves to the suitability of the product in its intended use and no guarantee is given or implied since the conditions of actual use are beyond our control. ASTROflame (Fireseals) Ltd, disclaim any liability for loss, damage or other expense arising from the use of information, data or products mentioned or referred to and reserve the right to change any details or specifications without notice.

Astroflame (Fire Seals) Ltd. Intumescent House  
Unit 8, The IO Centre, Stephenson Road, Segensworth  
FAREHAM, ENGLAND PO15 5RU

tel 0800 023 2482  
(01329 844500)

fax 0800 023 2483  
(01329 844600)

intl  
tel +44 1329 844500

fax +44 1329 844600

email