

Fire Proof Paints



ASTROflame[™]

MANUFACTURERS OF PASSIVE FIRE STOP PRODUCTS

PRODUCT GUIDE 14.0



Fire Proof Paints

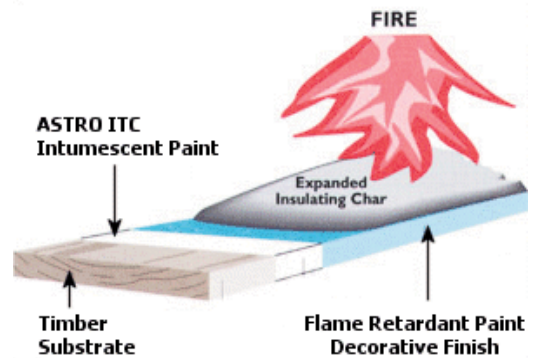
Astroflame stock a range of protective intumescent paints & coatings, for steel, timber, plaster and brick and a range of flame retardant paint finishes to decorate, protect and complete fire protection systems.

TRADE NAME: ASTRO ITC PAINT

Intumescent Paint for Timber

Class 1 & Class 0 Intumescent Paint. BS476 Part 7: Class 1 surface spread of flame. BS476 Part 6: Fire propagation. Class 0. Brush, roller or spray application.

Intumescent paint for bare or previously painted timber and timber derivative surfaces where surface spread of flame or fire propagation need to be controlled. The paint contains intumescent compounds, intumescent paint resin binders and high opacity pigments. When exposed to fire the paint expands to create a fire protective barrier, insulating the timber surfaces from heat and oxygen. ASTRO ITC Paint is available in 5 kilo and 20 kilo containers. It can be overcoated with our flame retardant paint - available in BS4800, RAL and metallic colours and a range of finishes.



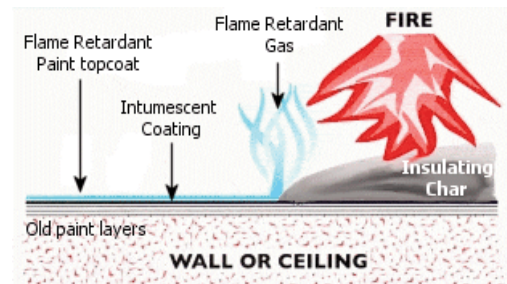
TRADE NAME: ASTRO IWC PAINT

Intumescent Paint for Walls & Ceilings

BS476 Part 7: Class 1 surface spread of flame. BS476 Part 6: Fire propagation. Designated Class 0 in accordance with U.K. Building Regulations.

Astroflame IWC is an intumescent undercoat for application to previously painted plaster, Artex, board, brick and concrete walls and ceilings. It is used to upgrade walls and ceilings coated with multi-layered paint films to Class 0. Overcoating with Astroflame FR flame retardant paint insulates old paint films from fire, controlling the spread of flames along walls and ceilings. In a fire thick layers of old paint tend to delaminate rapidly catching and spreading fire around a building. In extreme cases a lethal "flash-over" fireball effect is created. The resultant risk to life and property can be greatly reduced at minimum cost using a combination of Astroflame IWC paint, an insulating "intumescent" barrier coating, and Astroflame FR flame retardant paint. When exposed to a fire Astroflame flame retardant paint releases a flame extinguishing gas which instantly protects the surface.

Simultaneously heat activates Astroflame IWC intumescent coating underneath causing it to expand and create a fire protective barrier, insulating old paint films from heat and oxygen. Astroflame IWC Paint is available in 5 kilo and 20 kilo containers. It can be overcoated with our flame retardant paint - available in BS4800, RAL and metallic colours and a range of finishes.



TRADE NAME: ASTRO FR PAINT

Flame Retardant Paint

Fire proof paints BS476 rated. BS476 Part 7: Class 1 surface spread of flame. BS476 Part 6: Fire propagation. Designated Class 0 in accordance with U.K. Building Regulations. Gloss, Eggshell, Matt & Silk finishes. Brush, roller or spray application.

This paint is for use as either a decorative finish over our intumescent coatings or can be used alone as a decorative topcoat where that is deemed to provide adequate fire protection or on surfaces with a non-combustible performance currently maintained with flame retardant paints. Suitable for use direct to bare or sound previously painted non-combustible walls and ceilings. Fire proof paint is available in several finishes and BS4800 and RAL colour ranges in 2.5 litre and 5 litre containers.



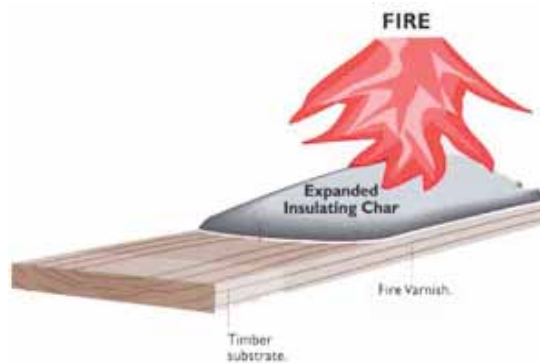
TRADE NAME: ASTRO IF VARNISH

Intumescent Fire Varnish

BS476 Part 7: Class 1 surface spread of flame. BS476 Part 6: Fire propagation. Designated Class 0 in accordance with U.K. Building Regulations. Water based clear Intumescent with White Spirit based decorative overcoat in Gloss, Satin or Matt finishes. Brush, roller or spray application.

When exposed to a fire Astroflame Intumescent Fire Varnish expands to create a fire protective barrier, insulating the timber surfaces from heat and oxygen. Astroflame Intumescent Fire Varnish is an exceptionally clear lacquer for decorative fire protection of prepared timber and timber derivative surfaces. Overcoated with ASTRO FVO, its special formula provides a hard, durable finish suitable for panelling, boarding, furniture etc. For internal and external use on bare or previously varnished surfaces.

A sealer coat/overcoat is also available in Gloss, Satin or Matt finishes. For humid areas apply Astroflame Fire Varnish Gloss Overcoat (ASTRO FVO) over the Astroflame Fire Varnish (ASTRO IFV). Astroflame Fire Varnish ASTRO IFV is available in 20m² packs. The sealer coat ASTRO FVO is available in gloss, satin or matt.



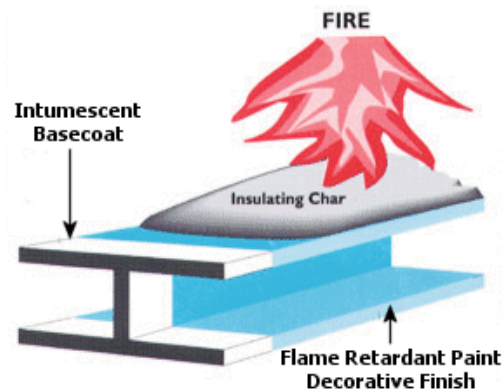
TRADE NAME: ASTRO ISS PAINT

Intumescent Paint for Structural Steel & Cast Iron

Conforms to BS476 Part 21: Fire resistance for load bearing elements of structure. Rated for 30, 60, 90 and 120 minutes. Brush, roller or airless spray application.

ASTRO ISS Paint is an intumescent coating for steel, a thin decorative fireproof paint system providing fire resistance to structural steel and cast iron. Heat from a fire triggers a catalytic reaction causing intumescence (expansion) of an insulating char layer up to 50 times the paint film thickness. This char keeps the steel below critical temperature to maintain the structural stability of the building.

Fire resistance of ½ hour and 1 hour can be achieved with a single applications of ASTRO ISS Paint. 1½ hour fire resistant can be achieved with two coats of ASTRO ISS Paint. A range of hard, high quality, weather resistant decorative finishes matches the decor, architectural or historic features of a building while helping to make it a safer structure. Available in BS4800, RAL and metallic colours and a non decorative finish for unexposed areas. ASTRO ISS Paint is available in 5 kilo and 20 kilo containers. ASTRO FR PAINT (flame retardant topcoat finish) is available in 2.5 and 5 Litre containers



TRADE NAME: ASTRO HBP PRIMER

High Build Primer

Compatible with intumescent paint. Solvent or water based options. Brush, roller or spray.

A High Build Quick Drying corrosion resistant metal primer for structural steel and cast iron. Contains high durability resin binders, light fast

pigments and a high concentration of zinc phosphate. Compatible with ASTRO ISS Paint and most other intumescent paint systems, epoxy and conventional paints.

May be overcoated with our intumescent paint systems as well as epoxy, conventional gloss, eggshell, acrylic and vinyl paint finishes. ASTRO HBP Primer is available in 2.5 litre and 5 litre containers and in Red, White or Grey.

Passive Fire Protection from Astroflame



Intumescent Acoustic Downlighter Cover



Fire Rated Luminaire Canopy



Intumescent Pipe Collar



Intumescent Pipe Wrap



Thermal Fire Pipe Sleeve



Intumescent Pillow



Intumescent Duct Wrap



Duct Sleeve



Cable Basket Sleeve



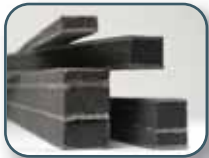
Loft Cone Vapour Seal



Fire Trunk Sleeve



Cable Tray Sleeve



Intumescent Expansion Joint Seal



Fire Rated Cladding Seal



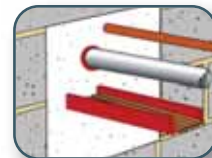
Fire Batt & Coating



Intumescent Fire & Acoustic Socket Box



Intumescent Putty



Fire Resistant Mortar

ASTROflameTM

MANUFACTURERS OF PASSIVE FIRE STOP PRODUCTS

UK OFFICE

Astroflame Fireseals Ltd, Unit 8, The I.O. Centre
Stephenson Road, Segensworth, Fareham, England PO15 5RU

T 0800 023 2482 (01329 844500) Tel Intl +44 1329 844500
F 0800 023 2483 (01329 844600) Fax Intl +44 1329 844600
E sales@astroflame.com

www.astroflame.com www.astrodraft.com

Only ever a click away...

...from one of the most extensive ranges of passive fire stop products on-line. Order and quote via our website for fast and effective pricing of products in an instant!

www.astroflame.com

