

Product Data Sheet

Astro LC Loft Cone

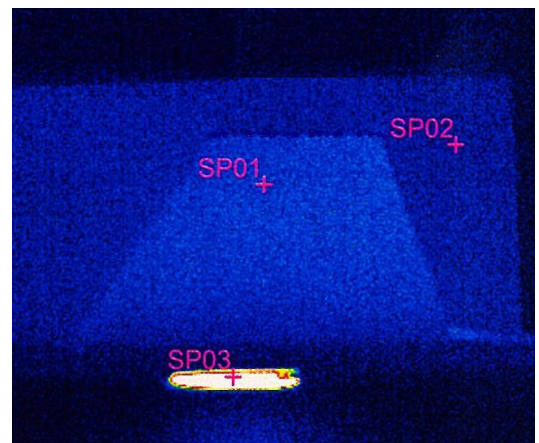
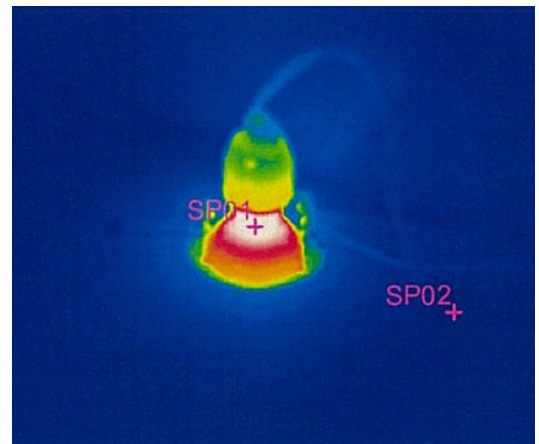
Revision 6 - 5th March 2021



Astro LC Loft Cone

Fire Rated Loft Cone

- F-Capped Flanged Fire Hood 30 minute fire rated.
- Tested for 50 Watt lamps.
- Tested to BS EN 60598.1 and 60598.2.2 with 50 Watt Dichroic Lamps and approved to be fully buried in insulation.
- BS 476 Part 20 : 1987
- Airtightness tested to BS EN 1026 for maximum thermal efficiency.
- Tested to BS EN 1363-1 and in accordance with BS EN 1364-2.
- Easily fitted - simply drop over light fitting and seal with mastic to form vapour seal.
- Save energy by limiting heat loss into loft space.
- Allows continuous insulation over lights.
- Fully tested to prevent overheating.
- Reduces fire risk by keeping combustibles away from hot downlight.
- Rigid and capable of supporting loft insulation away from light fitting.



Product Description

Recessed downlights are a common feature in many homes, however they also represent a potential fire hazard, especially if buried in loft insulation. Numerous house fires have been caused by the ignition of combustibles in ceiling spaces caused by hot downlights being covered with insulation.

Product Description

The Astro LC Loft Cone are designed to provide a fire resistant solution and overcome thermal and vapour transmission into loft voids when installing recessed lights. The “F-capped” Approved Loft Cone maintains sufficient space around the fitting to allow continuous insulation to be laid directly over light fittings minimising overheating or fire risk.

The durable and lightweight cones are simply placed over the light fittings to allow the safe installation of loft insulation. The Loft Cones are certified “F-capped” in accordance with relevant industry standards having been tested to both BS EN 60598.1 and BS EN 60598.2.2. In addition the Loft Cones are Fire Resistance, Flammability and Airtightness tested and are certified IP6 Dust Tight.

Dimensions: External 240mm x 180mm high. Internal 200mm x 150mm high.

Product Availability

Product Code	Product Description	External Size	Internal Size
AFLOFTCON	Astro LC Loft Cone	240x180mm	200x150mm

To Order & Specify

Please contact us and quote the following information - Quantity / Product Code / Product Description / External size / Internal size

Typical example:- 10 / AFLOFTCON / Astro LC Loft Cone / 240x180mm / 200x150mm

>> Tel: [01329 844 500](tel:01329844500) or >> Email: sales@astroflame.com

Installation

We have technical representatives who provide assistance in the selection and specification of the products on this site and should be consulted for exact installation and product suitability. Ensure an early engagement with ourselves, designers, main contractor and specialist installers before any installation. Other trades and/or manufacturers may need to be consulted. For in-depth information, specification and technical advice please call our Head Office on tel [01329 844 500](tel:01329844500) or email sales@astroflame.com

Maintenance

All interested parties, designer, specifier, main contractor and specialist installers should provide access to allow the fire stopping seals to be regularly inspected and maintained, as well as records kept of such maintenance at minimum periods of 12 months, as required by the Regulatory Reform Order, and repaired if necessary. Reference should be made to ASFP TGD 17 – Code of Practice for the Installation and Inspection of Fire Stopping.

Competency

It is vital that those entrusted to design or install a fire stopping product have the necessary levels of competence to undertake the task professionally and thoroughly. The level of competency required will be commensurate with the expected complexity of the building. All designers must eliminate, reduce or control foreseeable risks that may arise during installation, construction or maintenance when preparing or modifying designs. Clients should ensure that the principal designer and principal contractor carry out their duties under CDM regulations. The ASFP foundation course in passive fire protection provides essential knowledge as part of demonstrating competency and understanding in this key fire protection specialism.

Additional Notes

For further information on installation requirements please refer to the lighting fitting manufacturer data to ensure the compatibility of this product, if in doubt please contact the technical team on: T: [01329 844 500](tel:01329844500) or E: sales@astroflame.com

Health and Safety

Please see (SDS) Safety Data sheet - This can be requested from our sales team T: [01329 844 500](tel:01329844500) or E: sales@astroflame.com

As part of our policy of ongoing improvements, we reserve the right to modify, alter or change product specifications without giving notice. Product illustrations are representations only. All information contained in this document is provided for guidance only, and as ASTROFLAME (FIRE SEALS) LTD has no control over the specific application or installation methods of the products, or of the prevailing site conditions, no warranties expressed or implied are intended to be given as to the actual performance of the products mentioned or referred to, and no liability whatsoever will be accepted for any loss, damage or injury arising from the use of the information given of products mentioned or referred to herein.

The above information to the best of our knowledge is true and accurate and based upon current test data and is supplied for your guidance only. Customers should satisfy themselves to the suitability of the product based on the products limitation of applications and that the product is fit for purpose for their intended use and no guarantee is given or implied since the conditions of actual use are beyond our control. ASTROFLAME (FIRE SEALS) LTD, disclaim any liability for loss, damage or other expense arising from the use of information, data or products mentioned or referred to and reserve the right to change any details or specifications without notice. If you are in any doubt as to the suitability of this product for your intended application please contact our technical team on 01329 844500 or email sales@astroflame.com and we will contact you.