

# Product Data Sheet

## Astro PFP Pipe Closer

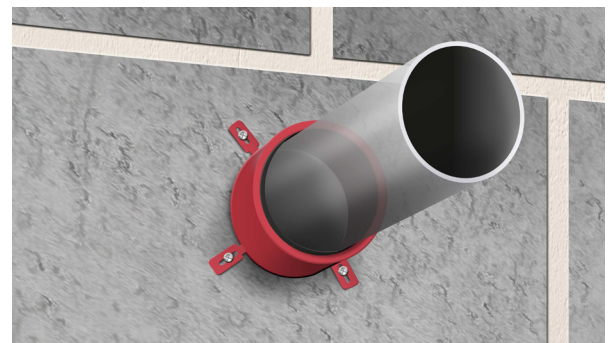
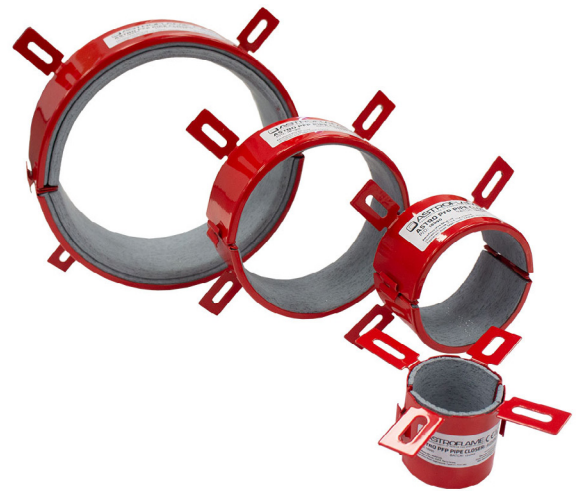
Revision 7 - 14th April 2021



## Astro PFP Pipe Closer

### CE Marked Intumescent Pipe Closer

- CE Marked.
- For pipe sizes from smallest pipes available to Ø315 mm with a wide range of pipe wall thicknesses.
- Smaller pipes can be fitted within larger closers with the benefit of accommodating pipes that are at an angle or if the opening around the pipe is too large.
- Fire classifications up to 240 minutes for both integrity and insulation.
- Certified for PVC-U, PVC-C, PE, LDPE, MDPE, HDPE, ABS, SAN+PVC and PP and a wide range of composite plastic pipes.
- Tested for U/U pipe end applications.
- For internal use.



#### Product Description

Astro PFP Pipe Closer are designed to maintain the fire resistance of fire rated walls and floors where these are breached by continuous plastic pipes. Astro PFP Pipe Closer can be used in gypsum, masonry and concrete walls and with concrete floors.

Each pipe closer consists of a Red/Silver coated circular steel shell that splits in two to fit around the service penetrations by means of a simple 'slide-lock' system.

The steel shell contains a graphite based reactive material which reacts when exposed to heat closing the openings left by the softening plastic pipe in fire.



0843

Astroflame Fireseals Ltd  
Unit 8 The 10 Centre  
Stephenson Road  
Segensworth, Fareham  
Hampshire PO15 5RU  
21  
CE-0843-CPR-0498

ETA-21/0025  
ETAG 026 - Part 1  
ETAG 026 - Part 2  
ASTRO PFP PIPE  
CLOSER

"see ETA-21/0025 for  
relevant characteristics"

### Product Description

When testing pipes, one can choose not to cap (or close) the pipe, or cap the pipe inside the furnace, or outside the furnace, or on both sides. The configuration chosen depends on the intended application of the pipe and/or the installation environment. The code defining if a pipe is capped is stated after the fire classification. For instance, EI 60 C/U which means the pipe was capped inside the furnace, and uncapped outside the furnace. The test configuration defines the approvals possible.

Our engineering judgment based on EN 1366-3:2009 are:

Intended use of pipe		Pipe end condition <sup>4)</sup>
Rainwater pipe, plastic	At drainage	U/U <sup>1)</sup>
	Not at drainage	C/C <sup>2)</sup>
Drainage or sewage pipe, plastic	Ventilated drain	U/U <sup>1)</sup>
	Unventilated drain	U/C <sup>1)</sup>
	Drain w/water trap	U/C <sup>1)</sup>
	Not at drainage	C/C <sup>2)</sup>
Pipe in closed circuit (water, gas, air, electricity etc.)		C/C <sup>2) 3)</sup>
Flue gas recovery system pipe, plastic		U/C <sup>1)</sup>
Pipe with open ends and ≥ 50cm length on both sides, plastic		U/U <sup>2)</sup>
Pipe supported by suspension system, metal	Fire rated support	C/U <sup>1)</sup>
	Non-fire rated	U/C <sup>1)</sup>
Waste disposal shaft pipe, metal		U/C <sup>1)</sup>

<sup>1)</sup> Suggested in EN 1366-3:2009. <sup>2)</sup> Judgment based on tests.

<sup>3)</sup> Metal pipes should have fire rated support. <sup>4)</sup> U/U classified fire seals cover C/U, U/C and C/C. C/U classified fire seals cover U/C and C/C. U/C classified fire seals cover C/C.

Technical Data	
Condition	Ready for use, steel shell with a graphite material
Shell	Powder coated 1mm steel
Conditioning procedure	EN 13238:2010
Expansion ratio	17:1
Expansion pressure	65.4 N
Graphite weight	1.4 kg/m <sup>2</sup> per mm thickness
Graphite density	1409 kg/m <sup>3</sup>
Normal expansion time	Less than 2 minutes
Minimum expansion temperature	105 °C
Durability	Z <sub>2</sub> intended for use in internal conditions with humidity classes other than Z <sub>1</sub> , excluding temperatures below 0°C.
Storage	May be stored for a long period of time. To be stored in temperatures between 5°C and 30°C
Installation temp.	+5°C to +50°C (sealant)
Colour	Red/Stainless Steel shell with anthracite inlay

**Product Availability**

Product Code	Product Description	Size
AFPFPPC32	Astro PFP Pipe Closer: 32mm (Depth 50mm)	32mm
AFPFPPC40	Astro PFP Pipe Closer: 40mm (Depth 50mm)	40mm
AFPFPPC55	Astro PFP Pipe Closer: 55mm (Depth 50mm)	55mm
AFPFPPC63	Astro PFP Pipe Closer: 63mm (Depth 50mm)	63mm
AFPFPPC75	Astro PFP Pipe Closer: 75mm (Depth 50mm)	75mm
AFPFPPC82	Astro PFP Pipe Closer: 82mm (Depth 50mm)	82mm
AFPFPPC90	Astro PFP Pipe Closer: 90mm (Depth 50mm)	90mm
AFPFPPC110	Astro PFP Pipe Closer: 110mm (Depth 50mm)	110mm
AFPFPPC125	Astro PFP Pipe Closer: 125mm (Depth 60mm)	125mm
AFPFPPC140	Astro PFP Pipe Closer: 140mm (Depth 60mm)	140mm
AFPFPPC160	Astro PFP Pipe Closer: 160mm (Depth 60mm)	160mm
AFPFPPC200	Astro PFP Pipe Closer: 200mm (Depth 75mm)	200mm
AFPFPPC250	Astro PFP Pipe Closer: 250mm (Depth 75mm)	250mm
AFPFPPC315	Astro PFP Pipe Closer: 315mm (Depth 75mm)	315mm

**To Order & Specify**

Please contact us and quote the following information - Quantity / Product Code / Product Description / Size  
Typical example:- 10 / AFPFPPC110 / Astro PFP Pipe Closer / 110mm

>> Tel: [01329 844 500](tel:01329844500) or >> Email: [sales@astroflame.com](mailto:sales@astroflame.com)

**Installation**

We have technical representatives who provide assistance in the selection and specification of the products on this site and should be consulted for exact installation and product suitability. Ensure an early engagement with ourselves, designers, main contractor and specialist installers before any installation. Other trades and/or manufacturers may need to be consulted. For in-depth information, specification and technical advice please call our Head Office on tel [01329 844 500](tel:01329844500) or email [sales@astroflame.com](mailto:sales@astroflame.com)

**Maintenance**

All interested parties, designer, specifier, main contractor and specialist installers should provide access to allow the fire stopping seals to be regularly inspected and maintained, as well as records kept of such maintenance at minimum periods of 12 months, as required by the Regulatory Reform Order, and repaired if necessary. Reference should be made to ASFP TGD 17 – Code of Practice for the Installation and Inspection of Fire Stopping.

## Competency

It is vital that those entrusted to design or install a fire stopping product have the necessary levels of competence to undertake the task professionally and thoroughly. The level of competency required will be commensurate with the expected complexity of the building. All designers must eliminate, reduce or control foreseeable risks that may arise during installation, construction or maintenance when preparing or modifying designs. Clients should ensure that the principal designer and principal contractor carry out their duties under CDM regulations. The ASFP foundation course in passive fire protection provides essential knowledge as part of demonstrating competency and understanding in this key fire protection specialism.

## Additional Notes

Please refer to the ETA sheet for fields of application for this product. For further information on installation requirements please refer to the pipe manufacturer data and wall specification to ensure the compatibility of this product, if in doubt please contact the technical team with services and wall specification on: tel [01329 844 500](tel:01329844500) or email [sales@astroflame.com](mailto:sales@astroflame.com)

## Health and Safety

Please see (SDS) Safety Data sheet - This can be requested from our sales team T: [01329 844 500](tel:01329844500) or E: [sales@astroflame.com](mailto:sales@astroflame.com)

As part of our policy of ongoing improvements, we reserve the right to modify, alter or change product specifications without giving notice. Product illustrations are representations only. All information contained in this document is provided for guidance only, and as ASTROFLAME (FIRE SEALS) LTD has no control over the specific application or installation methods of the products, or of the prevailing site conditions, no warranties expressed or implied are intended to be given as to the actual performance of the products mentioned or referred to, and no liability whatsoever will be accepted for any loss, damage or injury arising from the use of the information given of products mentioned or referred to herein.

The above information to the best of our knowledge is true and accurate and based upon current test data and is supplied for your guidance only. Customers should satisfy themselves to the suitability of the product based on the products limitation of applications and that the product is fit for purpose for their intended use and no guarantee is given or implied since the conditions of actual use are beyond our control. ASTROFLAME (FIRE SEALS) LTD, disclaim any liability for loss, damage or other expense arising from the use of information, data or products mentioned or referred to and reserve the right to change any details or specifications without notice. If you are in any doubt as to the suitability of this product for your intended application please contact our technical team on 01329 844500 or email [sales@astroflame.com](mailto:sales@astroflame.com) and we will contact you.