

Installation Sheet

Astro corner guard clear

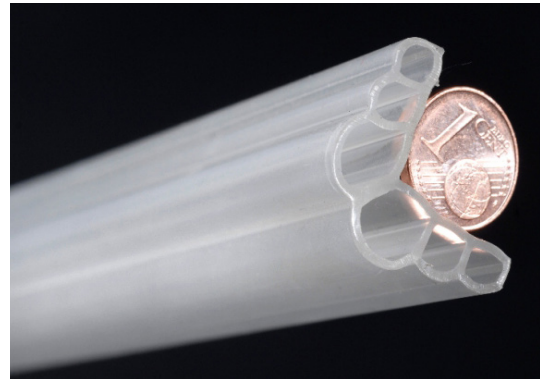
Revision 2 - May 2018



Astro corner guard clear

Tools & Equipment

- Steel Tape Measure
- Carpenters Pencil
- Cleaning cloth
- drill



Introduction

The purpose of this document is to give guidance to approved contractors and suppliers who are engaged in the prevention of corner accidents using the Astro corner guard clear.

The strip can be used on almost all corners and edges of walls, windowsills, radiators, table corners etc. Maximum temperature 110°C. Outdoors the strips should only be applied to corners and edges which are well protected against low temperature, direct sun and dampness. When used outdoors, the life of the strips will be considerably reduced by exposure to the elements. Strips can also be cut to size and used to give protection from sharp edges. For example, windowsills etc.

Use and base surface:

- Suitable for use on an even and smooth surface
- Corner Guard is not really suitable for using on an uneven and rough surface

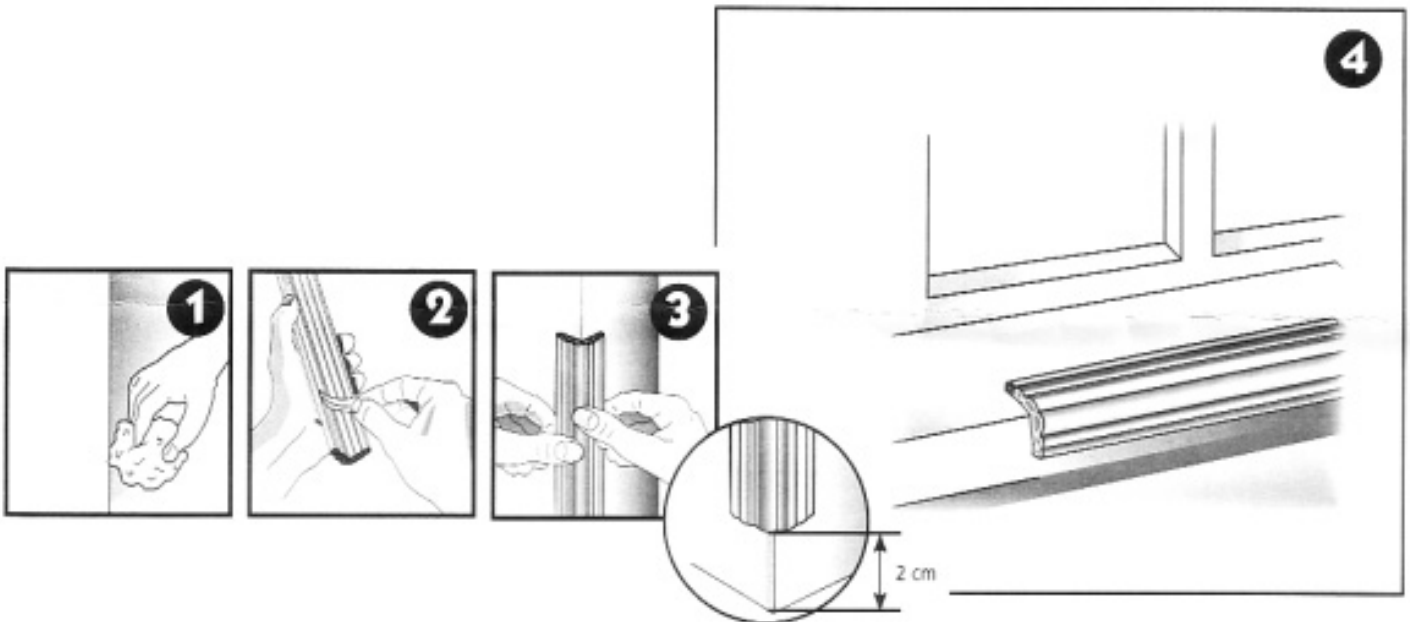
Important information:

- The Corner Gaurd can be applied to almost any surface (wood, plastic or metal) and can be cleaned with water.
- Check the strips regularly to see whether they are stilll firmly in place.
- When removing the strips the surface or paint layer may be damaged.

Installation

To fix the strip even more securely it should also be held in place by four screws with washers, two of the upper and two on the lower side of the strip.

1. Remove grease from the parts of wall or corner on which the strip is to be mounted (sand lightly for improved adhesion). Thoroughly dry areas which are to be glued.
2. Stick the tape onto both of the flats sides of the strip. Remove the protective film from the adhesive strip on the Corner Guard.
3. Place the strip about 2 cm above the floor or 2 cm above the skirting board. Once in place firmly press the Corner Guard on both sides for about 5 minutes. To ensure good adhesion the strip should not be touched for about 15 minutes.
4. Strips can also be cut to size and applied to sharp corners of a windowsill or any other object with sharp corners or curves to make them safe.



Storage and disposal

Astro corner guard clear should be stored indoors. No shelf life is given as this product will not deteriorate in storage. For further information on installation requirements please contact the technical team on: tel [01329 844 500](tel:01329 844 500) or email sales@astroflame.com

As part of our policy of ongoing improvements, we reserve the right to modify, alter or change product specifications without giving notice. Product illustrations are representations only. All information contained in this document is provided for guidance only, and as ASTROFLAME FIRESEALS LTD has no control over the installation methods of the products, or of the prevailing site conditions, no warranties expressed or implied are intended to be given as to the actual performance of the products mentioned or referred to, and no liability whatsoever will be accepted for any loss, damage or injury arising from the use of the information given of products mentioned or referred to herein.

The above information to the best of our knowledge is true and accurate and based upon current test data and is supplied for your guidance only. Customers should satisfy themselves to the suitability of the product in its intended use and no guarantee is given or implied since the conditions of actual use are beyond our control. ASTROflame (Fireseals) Ltd, disclaim any liability for loss, damage or other expense arising from the use of information, data or products mentioned or referred to and reserve the right to change any details or specifications without notice.