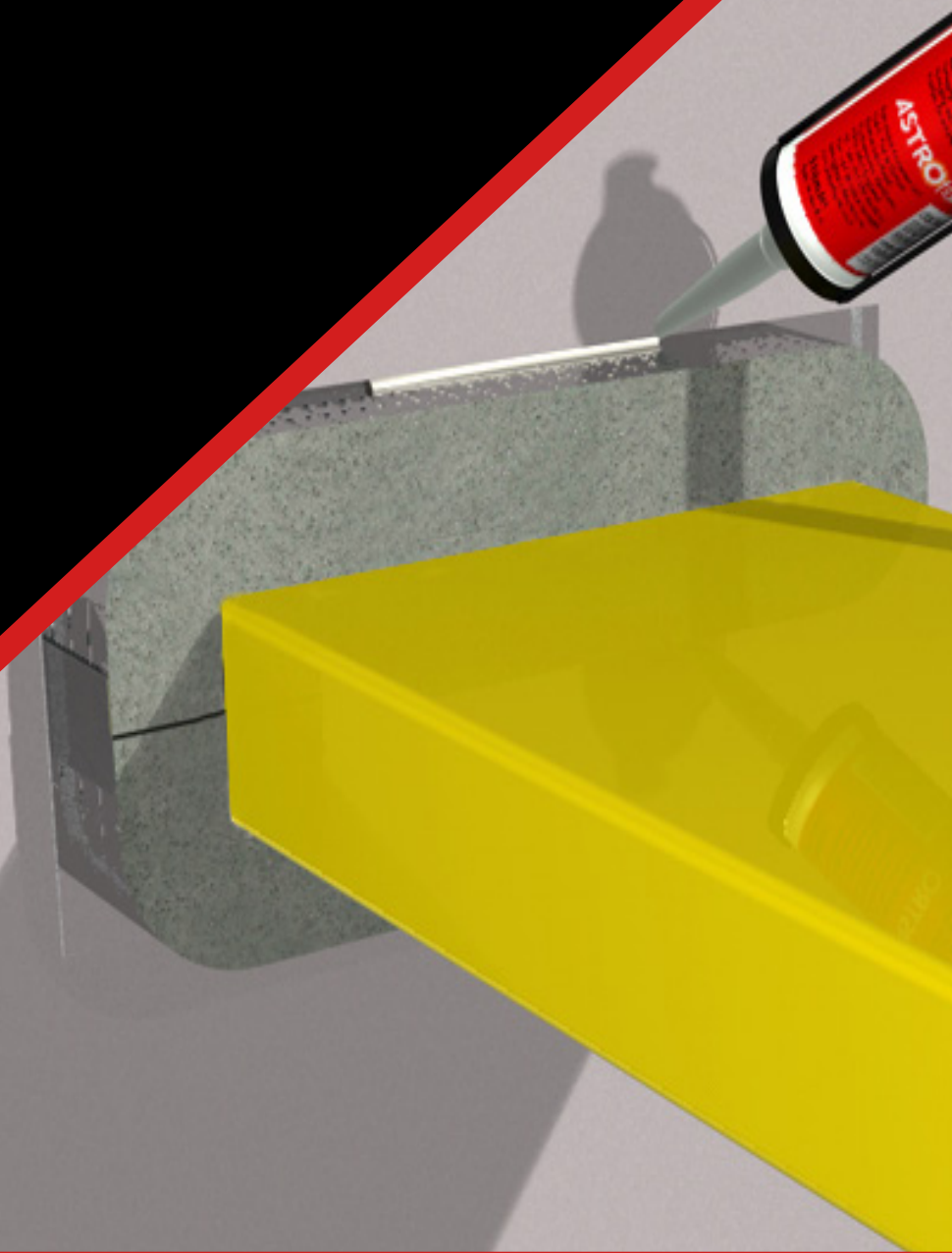


Product Data Sheet

Astro DS Duct Sleeve

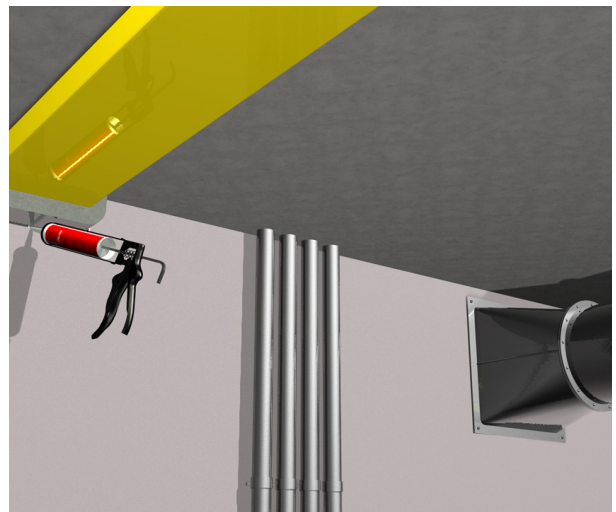
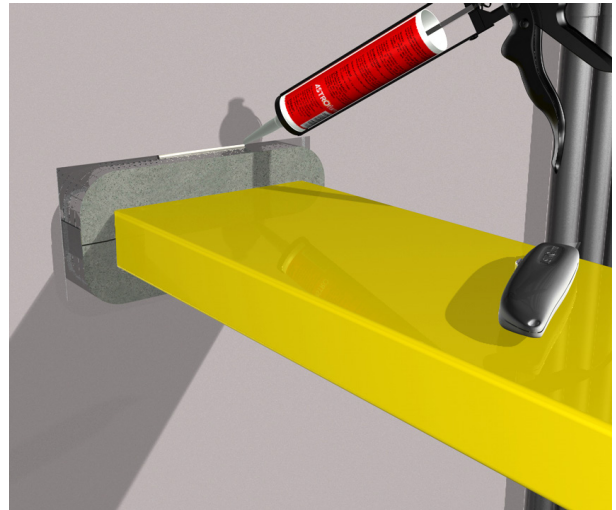
Revision 15 - 30th April 2026



Astro DS Duct Sleeve

CE Marked Intumescent Duct Sleeve

- CE Marked.
- Tested in accordance with BS 476 Parts 20 and 22 : 1987 and EN 1366-3 : 2009.
- Uncapped / Uncapped (Open | Open) fire tested as required for ventilation systems.
- Suitable for use through a wide range of fire partition walls.
- Offers excellent acoustic insulation
- Maintains the thermal insulation of the duct through the penetration.
- Maintains vapour seal of existing insulation
- Sleeve can be easily fitted only requiring access from one side
- Allows the thermal movement of the duct
- Simple to install without special tools or skills



Product Description

The Astroflame range of Astro DS duct sleeves are intended for use where a ventilation duct passes through a fire rated wall. The sleeve maintains the integrity of the fire rated wall which would otherwise be lost.

In the event of a fire, the advanced Astro DS Duct Sleeve will expand with the heat, crushing the duct and closing off the hole to the fire for up to 120 minutes except the 220x90mm version which is rated up to 60 minutes.

The Ventilation duct sleeves are available to fit all common sizes of plastic ventilation duct and are suitable for retro fitting with access only required from one side.

 2812
Astroflame Fireseals Ltd Unit 8 The I O Centre Stephenson Road Segensworth, Fareham Hampshire PO15 5RU 20 2812-CPR-0555
ETA-20-1337 ETAG 026 - Part 2 ASTRO DS DUCT SLEEVE/+ "see ETA-20/1337 for relevant characteristics"

Product Availability

Astro DS Duct sleeves are currently available in the following nominal sizes

Product Code	Product Description	Width	Height	Product Length
AFDS204	Astro DS Duct Sleeve	204mm	60mm	180mm
AFDS22090	Astro DS Duct Sleeve	220mm	90mm	180mm
AFDS234	Astro DS Duct Sleeve	234mm	29mm	180mm

To Order & Specify

Please contact us and quote the following information - Quantity / Product Code / Product Description / Size
Typical example:- 10 / AFDS204 / Astro DS Duct Sleeve / 204mm x 60mm x 180mm

>> Tel: [01329 844 500](tel:01329844500) or >> Email: sales@astroflame.com

Installation

We have technical representatives who provide assistance in the selection and specification of the products on this site and should be consulted for exact installation and product suitability. Ensure an early engagement with ourselves, designers, main contractor and specialist installers before any installation. Other trades and/or manufacturers may need to be consulted. For in-depth information, specification and technical advice please call our Head Office on tel [01329 844 500](tel:01329844500) or email sales@astroflame.com

Maintenance

All interested parties, designer, specifier, main contractor and specialist installers should provide access to allow the fire stopping seals to be regularly inspected and maintained, as well as records kept of such maintenance at minimum periods of 12 months, as required by the Regulatory Reform Order, and repaired if necessary. Reference should be made to ASFP TGD 17 – Code of Practice for the Installation and Inspection of Fire Stopping.

Competency

It is vital that those entrusted to design or install a fire stopping product have the necessary levels of competence to undertake the task professionally and thoroughly. The level of competency required will be commensurate with the expected complexity of the building. All designers must eliminate, reduce or control foreseeable risks that may arise during installation, construction or maintenance when preparing or modifying designs. Clients should ensure that the principal designer and principal contractor carry out their duties under CDM regulations. The ASFP foundation course in passive fire protection provides essential knowledge as part of demonstrating competency and understanding in this key fire protection specialism.

Additional Notes

Please refer to the ETA sheet for fields of application for this product. For further information on installation requirements please refer to the duct manufacturer data and wall specification to ensure the compatibility of this product, if in doubt please contact the technical team with services and wall specification on: tel [01329 844 500](tel:01329844500) or email sales@astroflame.com

Health and Safety

Please see (SDS) Safety Data sheet - This can be requested from our sales team T: [01329 844 500](tel:01329844500) or E: sales@astroflame.com

As part of our policy of ongoing improvements, we reserve the right to modify, alter or change product specifications without giving notice. Product illustrations are representations only. All information contained in this document is provided for guidance only, and as ASTROFLAME (FIRE SEALS) LTD has no control over the specific application or installation methods of the products, or of the prevailing site conditions, no warranties expressed or implied are intended to be given as to the actual performance of the products mentioned or referred to, and no liability whatsoever will be accepted for any loss, damage or injury arising from the use of the information given of products mentioned or referred to herein.

The above information to the best of our knowledge is true and accurate and based upon current test data and is supplied for your guidance only. Customers should satisfy themselves to the suitability of the product based on the products limitation of applications and that the product is fit for purpose for their intended use and no guarantee is given or implied since the conditions of actual use are beyond our control. ASTROFLAME (FIRE SEALS) LTD, disclaim any liability for loss, damage or other expense arising from the use of information, data or products mentioned or referred to and reserve the right to change any details or specifications without notice. If you are in any doubt as to the suitability of this product for your intended application please contact our technical team on 01329 844500 or email sales@astroflame.com and we will contact you.