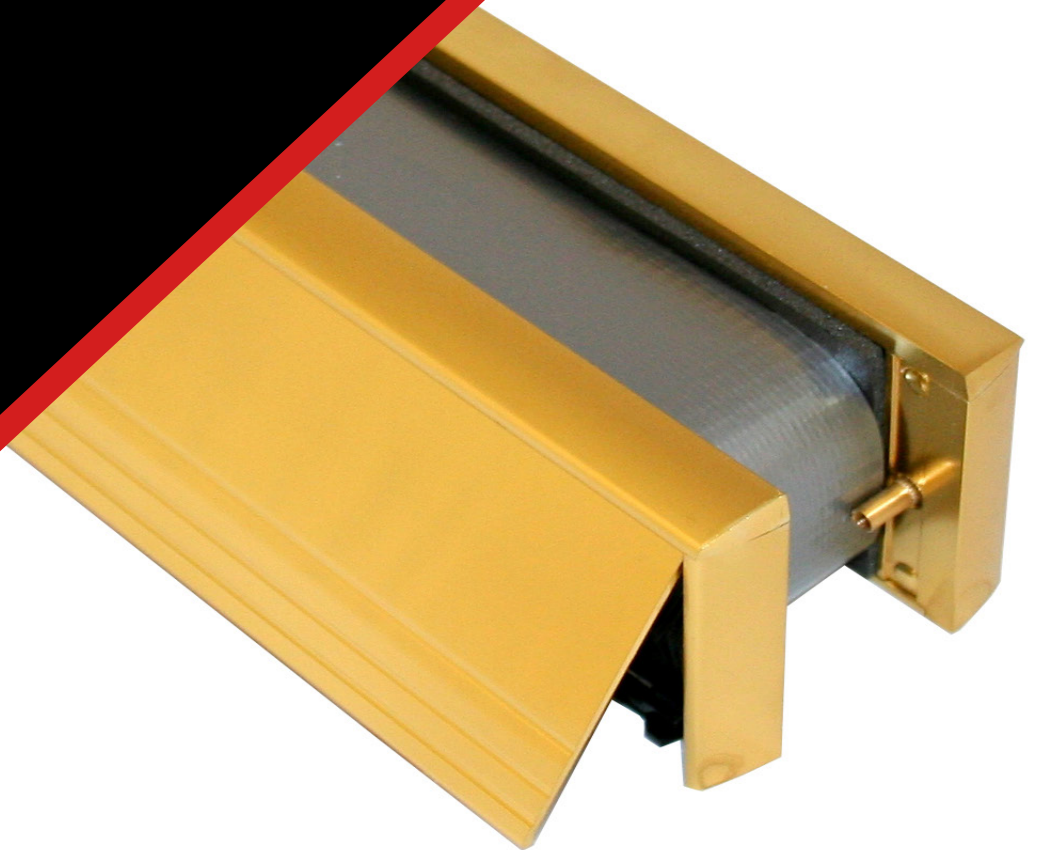


Product Data Sheet

Astro Telescopic Letterbox FXC 30/60

Revision 8 - 4th March 2021



Astro Telescopic Letterbox FXC 30/60

Intumescent Fire & Smoke Rated Telescopic Letterboxes

- 12" Width 30 / 60 min Fire Rated Letterbox.
- Adjustable telescopic fittings.
- Choice of 3 letter plate finishes.
- Test in accordance with BS 476 Part 20 & 22 : 1987.
- Smoke tested in accordance with BS EN 1634-3: 2004.



Product Description

A robust commercial metal framed telescopic letterbox with metal flaps and a high performance intumescent liner.

In the event of a fire the intumescent liner expands to seal the letterbox aperture and retains the fire integrity of the door.

Fire and smoke rated for 30 or 60 minutes.

Fitted with brush pile draught excluders and sound dampening bumpers with a fully sealed backplate.

Available in Satin Anodised Aluminium, Polished Gold and Polished Silver finishes.

Typical application: fitting to fire doors in multiple occupancy residential buildings.

Product Availability

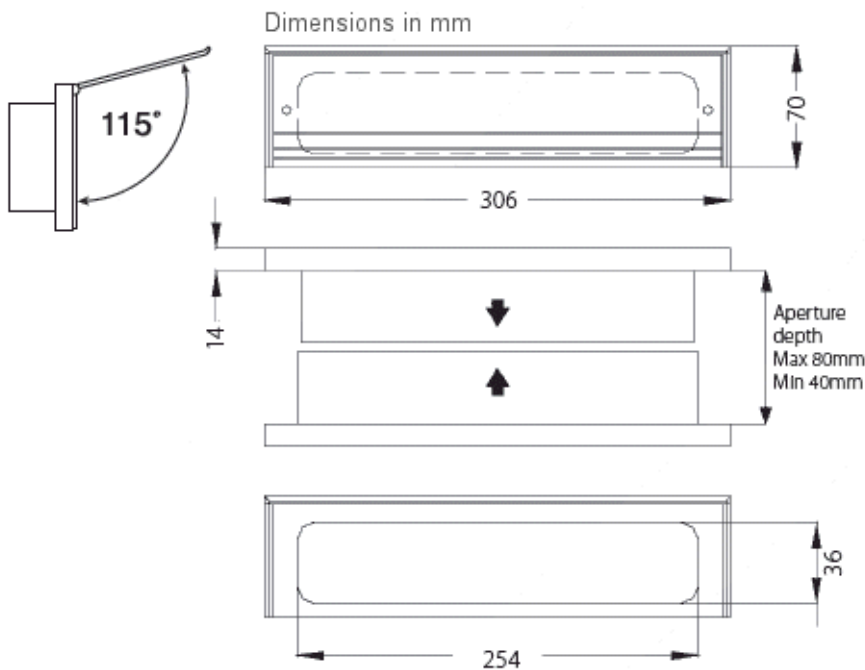
Cut out required on this size is 274mm x 57mm. Brushes are designed to go on the inside for maximum protection and draught proofing.

The overall size is 306mm x 70mm and comes as a 30/60 minute rated intumescent telescopic letterbox system with matching metal frame and metal letter plate flaps available in three finishes:

- Satin Anodised Aluminium
- Polished Gold Anodised
- Polished Silver

Letterbox flaps open to 115°. Smoke Testing was conducted to BS EN 1634-3: 2004 smoke control tests for door and shutter assemblies, operable windows and elements of building hardware – Part 3: Smoke control test for door and shutter assemblies.

For combined fire and acoustic requirements please refer to our [acoustic telescopic letterbox system](#).



Product Availability

All sizes - 10 per pack or single.

Product Code	Product Description	Colour
AFTLBFXC30/60SAAMF	30/60 Minute Fire / Smoke Letterbox - 306 x 70mm	SAA
AFTLBFXC30/60GAMF	30/60 Minute Fire / Smoke Letterbox - 306 x 70mm	Polished Gold
AFTLBFXC30/60PAMF	30/60 Minute Fire / Smoke Letterbox - 306 x 70mm	Polished Silver

To Order & Specify

Please contact us and quote the following information - Quantity / Product Code / Product Description / Colour
Typical example:- 12 / AFTLBFXC30/60SAAMF / 30 Minute Fire / Smoke Letterbox - 306 x 70mm / SAA

>> Tel: [01329 844 500](tel:01329844500) or >> Email: sales@astroflame.com

Installation

We have technical representatives who provide assistance in the selection and specification of the products on this site and should be consulted for exact installation and product suitability. Ensure an early engagement with ourselves, designers, main contractor and specialist installers before any installation. Other trades and/or manufacturers may need to be consulted. For in-depth information, specification and technical advice please call our Head Office on tel [01329 844 500](tel:01329844500) or email sales@astroflame.com

Maintenance

All interested parties, designer, specifier, main contractor and specialist installers should provide access to allow the fire stopping seals to be regularly inspected and maintained, as well as records kept of such maintenance at minimum periods of 12 months, as required by the Regulatory Reform Order, and repaired if necessary. Reference should be made to ASFP TGD 17 – Code of Practice for the Installation and Inspection of Fire Stopping.

Competency

It is vital that those entrusted to design or install a fire stopping product have the necessary levels of competence to undertake the task professionally and thoroughly. The level of competency required will be commensurate with the expected complexity of the building. All designers must eliminate, reduce or control foreseeable risks that may arise during installation, construction or maintenance when preparing or modifying designs. Clients should ensure that the principal designer and principal contractor carry out their duties under CDM regulations. The ASFP foundation course in passive fire protection provides essential knowledge as part of demonstrating competency and understanding in this key fire protection specialism.

Additional Notes

Each fire door and hardware component will have its own test evidence. It is the responsibility of the purchaser to ensure that the product is fully compliant with the relevant test evidence, if in doubt please contact the technical team on: tel [01329 844 500](tel:01329844500) or email sales@astroflame.com

Health and Safety

Please see (SDS) Safety Data sheet - This can be requested from our sales team T: [01329 844 500](tel:01329844500) or E: sales@astroflame.com

As part of our policy of ongoing improvements, we reserve the right to modify, alter or change product specifications without giving notice. Product illustrations are representations only. All information contained in this document is provided for guidance only, and as ASTROFLAME (FIRE SEALS) LTD has no control over the specific application or installation methods of the products, or of the prevailing site conditions, no warranties expressed or implied are intended to be given as to the actual performance of the products mentioned or referred to, and no liability whatsoever will be accepted for any loss, damage or injury arising from the use of the information given of products mentioned or referred to herein.

The above information to the best of our knowledge is true and accurate and based upon current test data and is supplied for your guidance only. Customers should satisfy themselves to the suitability of the product based on the products limitation of applications and that the product is fit for purpose for their intended use and no guarantee is given or implied since the conditions of actual use are beyond our control. ASTROFLAME (FIRE SEALS) LTD, disclaim any liability for loss, damage or other expense arising from the use of information, data or products mentioned or referred to and reserve the right to change any details or specifications without notice. If you are in any doubt as to the suitability of this product for your intended application please contact our technical team on 01329 844500 or email sales@astroflame.com and we will contact you.