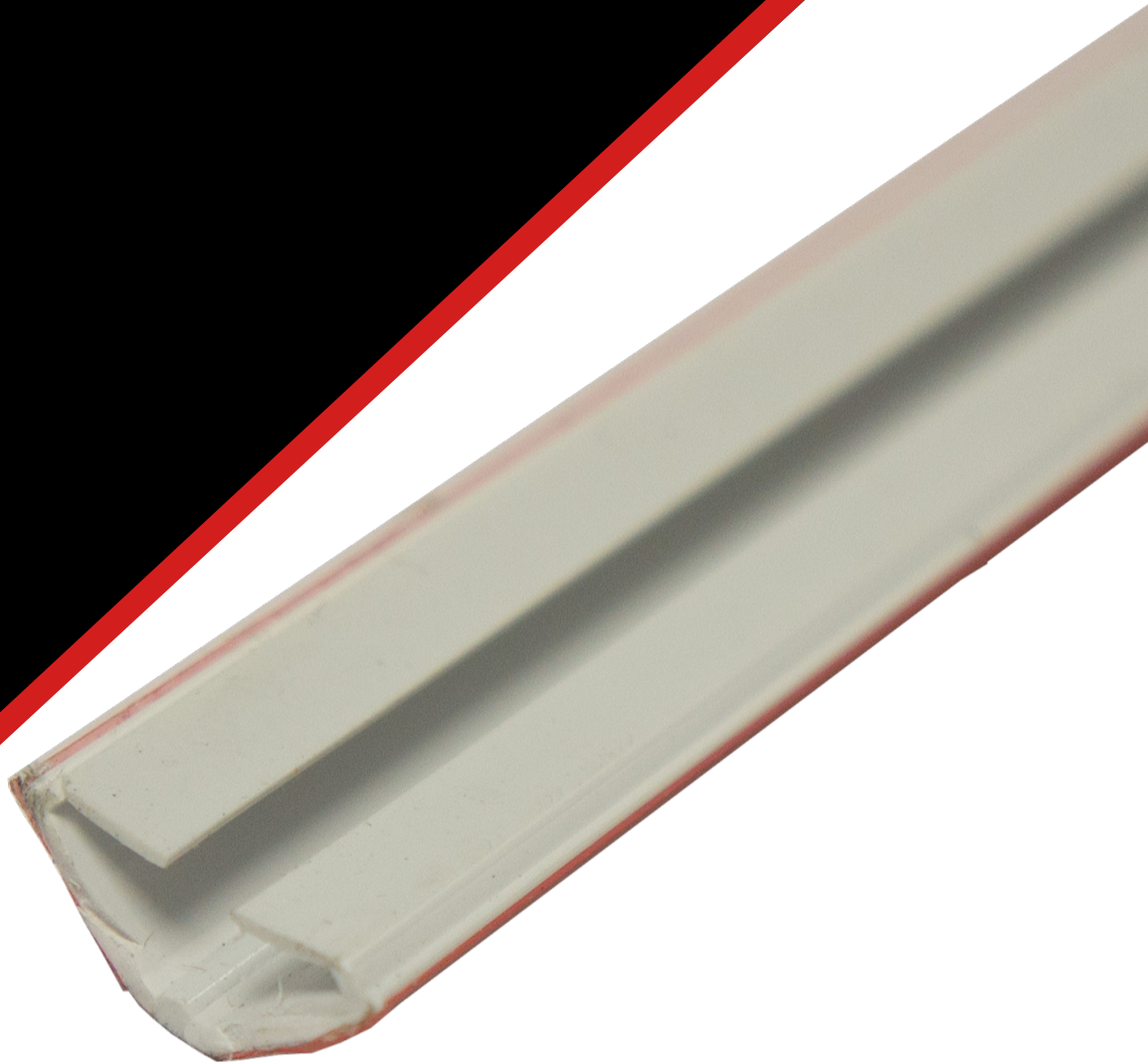


# Product Data Sheet

## Acoustic & Smoke Perimeter Seals

Revision 9 - 22nd February 2022



## Astro ASP : ASP/TF Seals

### Acoustic & Smoke Perimeter Seals

- Smoke tested in accordance with BS EN 1634-3: 2004.
- Sound reduction: Up to Rw37dB\* (single seal) and Up to Rw35dB\* (twin fin).
- Suitable for new and retrofit.
- Easy to install ASP self adhesive seals.
- Colour options for ASP/TF seal Black, Brown, White, Light Oak.

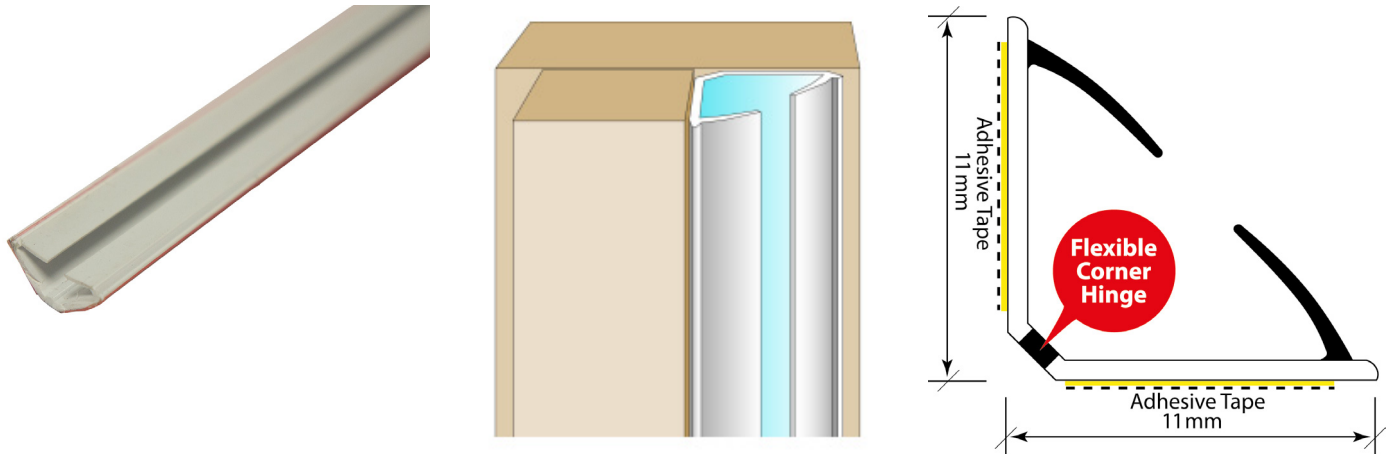


#### Product Description

A co-extruded PVC, acoustic and smoke perimeter self adhesive seal. Located in the protected corners of rebated frames of single or double broad butt hinged doors and windows.

The ASP Seal the ASPTF Twin Fin Seal is a compact design ideal for hygiene and clean rooms and removes the need to fit separate smoke seals.

**Product Description**



A co-extruded PVC, acoustic and smoke perimeter self adhesive seal. Located in the protected corners of rebated frames of single or double broad butt hinged doors and windows. Noise Reduction Index up to Rw 37dB\*. Suitable for new and retrofit applications the seals are quick and easy to apply.

The Astro Acoustic & Smoke Perimeter seal is manufactured from a rigid and flexible flame retardant PVC, complete with an aggressive self adhesive backing tape on both sides of the rigid carrier. For full acoustic and smoke sealing the Astro Acoustic & Smoke Perimeter seal should be used in conjunction with a **rebated**, semi morticed or surface mounted door bottom seal and where required acoustic & perhaps disabled access threshold seal. Smoke Testing was conducted to BS EN 1634-3: 2004 smoke control tests for door and shutter assemblies, openable windows and elements of building hardware – Part 3: Smoke control test for door and shutter assemblies.

**Applications and Product Features**

- Pedestrian doorsets, single and double leaf configurations
- New build or retro-fit applications
- Rigid legs with a flexible hinged corner makes for easy fitting
- Excellent compression and deflection performance

**Product Availability**

2100mm lengths, Colours: Black, White or Light Oak

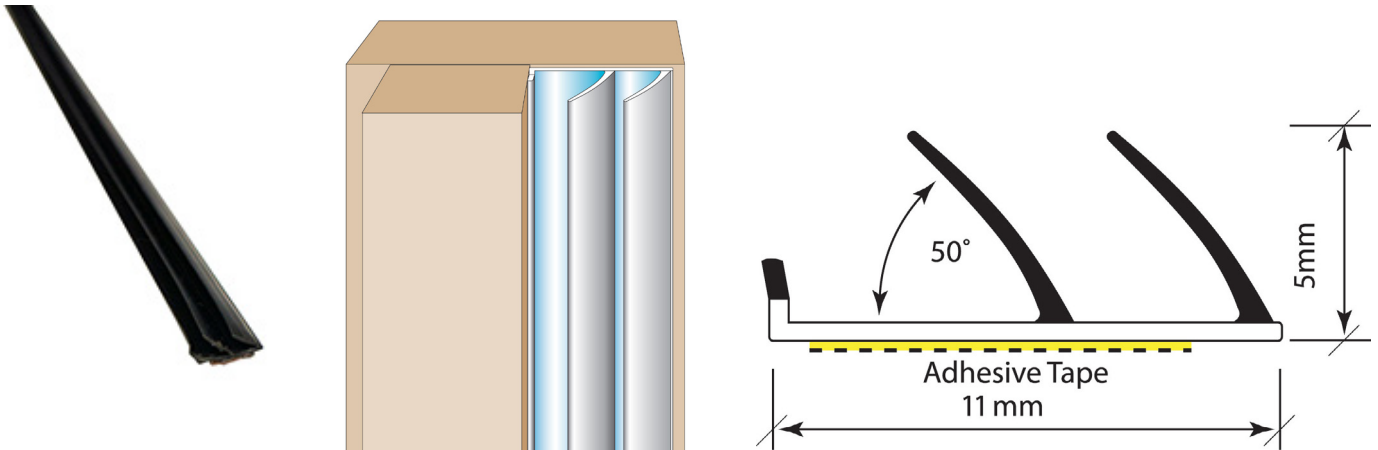
Product Code	Description	Colour	Length
AFASP/WHT	Astro ASP Seal	White	2100mm
AFASP/BLK	Astro ASP Seal	Black	2100mm
AFASP/LO	Astro ASP Seal	Light Oak	2100mm

**To Order & Specify**

Please contact us and quote the following information - Quantity / Product Description / Product Code / Colour  
Typical wording - 10 / Astro ASP Seal / AFASP/WHT / White

>> Tel: [01329 844 500](tel:01329844500) or >> Email: [sales@astroflame.com](mailto:sales@astroflame.com)

**Product Description**



Similar to the ASP Seal the ASPTF Twin Fin Seal is a compact design. Engineered to size to avoid overlapping door ironmongery. Noise Reduction Index up to Rw 35dB\*.

Suitable for new and retrofit applications the seals are quick and easy to apply. The Astro Acoustic & Smoke Perimeter TF seal is manufactured from rigid and flexible flame retardant PVC, complete with an aggressive self adhesive backing tape.

For full acoustic and smoke sealing the Astro Acoustic & Smoke Perimeter seal should be used in conjunction with a **rebated**, semi morticed or surface mounted door bottom seal and where required acoustic & perhaps disabled access threshold seal.

Smoke Testing was conducted to BS EN 1634-3: 2004 smoke control tests for door and shutter assemblies, openable windows and elements of building hardware – Part 3: Smoke control test for door and shutter assemblies.

**Product Availability**

2100mm lengths, Colours: Black, Brown, White or Light Oak

Product Code	Description	Colour	Length
AFASPTF/WHT	Astro ASP/TF Seal	White	2100mm
AFASPTF/B	Astro ASP/TF Seal	Brown	2100mm
AFASPTF/BLK	Astro ASP/TF Seal	Black	2100mm
AFASPTF/LO	Astro ASP/TF Seal	Light Oak	2100mm

**To Order & Specify**

Please contact us and quote the following information - Quantity / Product Description / Product Code / Colour  
Typical wording - 10 / Astro ASP/TF Seal / AFASPTF/WHT / White

>> Tel: [01329 844 500](tel:01329844500) or >> Email: [sales@astroflame.com](mailto:sales@astroflame.com)

## Installation

We have technical representatives who provide assistance in the selection and specification of the products on this site and should be consulted for exact installation and product suitability. Ensure an early engagement with ourselves, designers, main contractor and specialist installers before any installation. Other trades and/or manufacturers may need to be consulted. For in-depth information, specification and technical advice please call our Head Office on tel [01329 844 500](tel:01329844500) or email [sales@astroflame.com](mailto:sales@astroflame.com)

## Maintenance

All interested parties, designer, specifier, main contractor and specialist installers should provide access to allow the fire stopping seals to be regularly inspected and maintained, as well as records kept of such maintenance at minimum periods of 12 months, as required by the Regulatory Reform Order, and repaired if necessary. Reference should be made to ASFP TGD 17 – Code of Practice for the Installation and Inspection of Fire Stopping.

## Competency

It is vital that those entrusted to design or install a fire stopping product have the necessary levels of competence to undertake the task professionally and thoroughly. The level of competency required will be commensurate with the expected complexity of the building. All designers must eliminate, reduce or control foreseeable risks that may arise during installation, construction or maintenance when preparing or modifying designs. Clients should ensure that the principal designer and principal contractor carry out their duties under CDM regulations. The ASFP foundation course in passive fire protection provides essential knowledge as part of demonstrating competency and understanding in this key fire protection specialism.

## Additional notes

\* The acoustic ratings quoted will vary depending on the door density and any additional threshold & perimeter seals used in conjunction with this product, contact us for confirmation before specifying.

For further information on installation requirements please refer to the door manufacturer data to ensure the compatibility of this product, if in doubt please contact the technical team on: tel [01329 844 500](tel:01329844500) or email [sales@astroflame.com](mailto:sales@astroflame.com)

## Health and Safety

For further information on health and safety requirements please contact the technical team on: tel [01329 844 500](tel:01329844500) or email [sales@astroflame.com](mailto:sales@astroflame.com)

As part of our policy of ongoing improvements, we reserve the right to modify, alter or change product specifications without giving notice. Product illustrations are representations only. All information contained in this document is provided for guidance only, and as ASTROFLAME (FIRE SEALS) LTD has no control over the specific application or installation methods of the products, or of the prevailing site conditions, no warranties expressed or implied are intended to be given as to the actual performance of the products mentioned or referred to, and no liability whatsoever will be accepted for any loss, damage or injury arising from the use of the information given of products mentioned or referred to herein.

The above information to the best of our knowledge is true and accurate and based upon current test data and is supplied for your guidance only. Customers should satisfy themselves to the suitability of the product based on the products limitation of applications and that the product is fit for purpose for their intended use and no guarantee is given or implied since the conditions of actual use are beyond our control. ASTROFLAME (FIRE SEALS) LTD, disclaim any liability for loss, damage or other expense arising from the use of information, data or products mentioned or referred to and reserve the right to change any details or specifications without notice. If you are in any doubt as to the suitability of this product for your intended application please contact our technical team on 01329 844500 or email [sales@astroflame.com](mailto:sales@astroflame.com) and we will contact you.